



General Power Products

Portable Electric Generator

Owners Manual

MODEL: APP 6000



IMPORTANT – Please make certain the person who uses this Generator thoroughly reads these instructions and all other instructions provided to ensure proper safety, use, and care of your new GPP product.

www.generalpowerproducts.com

Thank you for purchasing a General Power Products generating set.



This symbol is known as the safety alert symbol and points out safety instructions that can lead to injury or death.



Attention:

Please read and understand this manual and the safety information prior to starting the Generator.

▲ DANGER

Danger: Indicates an imminently hazardous situation which, if not avoided, will result in death or serious injury.

▲ WARNING

Warning: Indicates a potentially hazardous situation which, if not avoided, could result in death or serious injury.

▲ CAUTION

Caution: Indicates a potentially hazardous situation which, if not avoided, may result in minor or moderate injury.



SAFETY INSTRUCTIONS

This generator is designed to supply electrical power. Please read and understand all of the safety instructions and warning labels associated with this generator.

- 1) Do not operate indoors.
- 2) Generator must be on a flat stable surface. Surface slope not to exceed 4 degrees.
- 3) Operate in a well lit and ventilated area.
- 4) Do not operate in moist or wet conditions including the surrounding ground.
- 5) The generator should be a minimum of 3 feet away from all combustible

materials and should not be used around hazardous materials.

- 6) Operating at a gas or natural gas filling station is forbidden.
- 7) Do not touch muffler or cylinder during or after operation. They are hot.
- 8) No smoking when filling the gas tank.
- 9) Do not overflow gas tank. Fill the tank to 1 inch below the top neck to allow for gas expansion. Ensure the ventilation hole in the gas cap is not plugged with foreign matter such as dirt or leaves.
- 10) The engine should be shut off for at least 2 minutes before adding gas or oil.
- 11) Do not open the gas tank or oil reservoir while the engine is running.
- 12) Be mindful of the danger, warning and caution labels on the generator.
- 13) Keep away from children. Children should be kept at a minimum of 6 feet away from the generator at all times.
- 14) In a normal situation the generator should be shut off using the instructions found on the front panel label.

Please contact General Power Products or your local GPP dealer with any questions.



Warning Labels and Descriptions

⚠ DANGER ⚠ PELIGRO



You **WILL** be Killed or **SERIOUSLY HURT** if you do not follow the Operator's Manual instructions.

SE MATARÁ o **LESIONARÁ GRAVEMENTE** si no sigue las instrucciones del Manual del operador.



Risk of Fire. Do not add fuel while the product is operating.

Riesgo de incendio. No agregue combustible cuando el producto esté funcionando.



Generator is a potential source of electric shock. Do not expose to moisture, rain or snow. Do not operate with wet hands or feet.

El generador es una fuente potencial de descarga eléctrica. No lo exponga a humedad, la lluvia ni a la nieve. No opere con manos o pies húmedos.



Exhaust contains poisonous carbon monoxide gas that can cause unconsciousness or **DEATH**. Operate in well ventilated, outdoor areas away from open windows or doors.

El escape contiene gas venenoso de monóxido de carbono que puede causar pérdida del conocimiento o **LA MUERTE**. Opere en áreas exteriores bien ventiladas lejos de puertas o ventanas abiertas.



Failure to properly ground generator can result in electrocution, especially if the generator is equipped with a wheel kit.

La omisión de conectar a tierra adecuadamente el generador puede resultar en electrocución, especialmente si el generador está equipado con un kit de ruedas.



Do not expose to rain or use in damp locations.

No exponga la unidad a la lluvia ni la use en lugares húmedos.



Do not use indoors or outside open windows. Fumes can kill you.

No utilice la unidad en el interior ni afuera de ventanas abiertas. Las emanaciones son mortales.

Recommended for Non-Commercial Use

Recomendado para Uso No-Comercial

⚠ WARNING

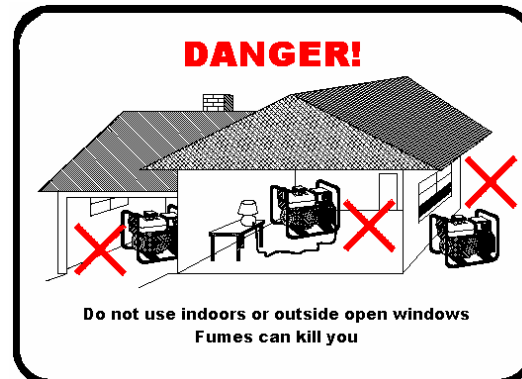
No smoking when filling the fuel tank. Full level is 1 inch below the top of the fuel neck. Engine should be off for 2 minutes before attempting to fuel as to not ignite fuel vapors.

Oil must be added before first operating the generator. Quantity depends on the model. Oil level should be kept between the upper and lower limits on the dipstick. Check oil level before each use. Too much or too little oil will increase part wear and therefore will shorten the generator service life.



Do not touch muffler or engine block. They are hot and will cause severe burns. Do not put flammable or combustible materials or fluids in the path of the exhaust.

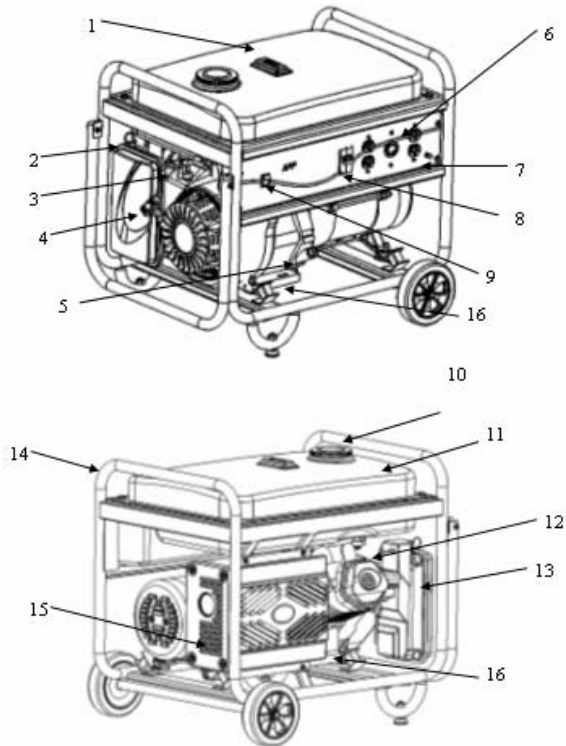
⚠ DANGER



Do not operate indoors. Exhaust fumes contain carbon monoxide, which is an odorless, tasteless gas that is deadly.

Consult your GPP service representative if you require further information.

Description of Parts



- 1) Fuel Tank
- 2) Choke
- 3) Fuel Valve
- 4) Starting Handle
- 5) Oil Dipstick
- 6) A.C. Socket
- 7) Ground Terminal
- 8) A.C. Breaker
- 9) On/Off Switch
- 10) Fuel Cap
- 11) Warning Label
- 12) Spark plug
- 13) Air Filter
- 14) Frame
- 15) Muffler
- 16) Drain Plugs

Ideal operating conditions:

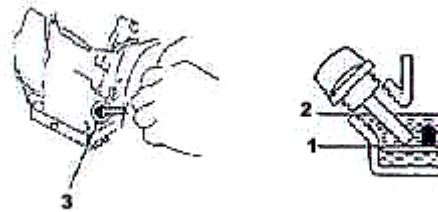
- Elevation less than 3000 feet.
- Surrounding Temperature between 23°F and 104°F.
- Relative humidity 90% or less.

Adjustments may need to be made to the carburetor for higher altitude operation.

⚠ CAUTION, THE ENGINE IS SHIPPED WITH NO ENGINE OIL. BEFORE STARTING ENGINE, FILL WITH OIL! (1 QUART, SEE PAGE 6)

Pre-Start Up

- 1) Check engine oil level.
 - a) Generator should be on level ground to ensure proper reading.
 - b) Remove oil dipstick and wipe with clean cloth (3).
 - c) Insert dipstick back into the neck until the threads meet. (It is not necessary to re-thread the dipstick.)



- d) Remove the dipstick again and view the oil level (between 1 and 2).
 - e) If the oil is below the hatched area on the dipstick, then oil must be added. Be careful not to fill past the hatched section on the dipstick. Too little or too much oil will not lubricate the engine properly and will cause serious engine wear or failure.
 - f) Replace the dipstick and screw down lightly.
- 2) Check Fuel Level
 - a) Remove Fuel Cap.
 - b) View the fuel level.
 - c) Fill the fuel tank up to 1 inch below the top of the fuel neck.
 - d) Replace the fuel cap.

- 3) Check Air Filter
 - a) Unclip the upper and lower retaining clips to remove the outer case of the cleaner.
 - b) Remove the outer filter element and inner pre-cleaner element.
 - c) Separate the filter element from the foam pre-cleaner.
 - d) Clean the foam pre-cleaner two times with kerosene or other approved cleaner. Apply a light coat of engine oil on the pre-cleaner and squeeze it out.
 - e) If the filter needs replacing, contact GPP or your local GPP service dealer.

Starting the Generator

- 1) Manual Pull Start
 - a) Disconnect any load from the A.C. socket.
 - b) Shut off the A.C. breaker.
 - c) Turn the fuel valve to the "ON" position.
 - d) Put the choke handle in the "ON" position.
 - i) When engine is warm the choke is not necessary.
 - e) Flip the engine switch to the "ON" position.
 - f) Slightly pull the pull-start handle until feeling resistance. Then pull handle forcefully.
 - i) Do not let the pull handle go to return freely. Return it back by hand to avoid damage to the recoil mechanism.
 - g) Repeat process as needed.
 - h) Turn choke off when engine is warm.

Engine Operation Methods

To keep your generator set in optimum mechanical and electrical condition, please apply the following:

	Starting	Rating		Equipment	Start	Rating
Resistive Load	x1	x1	Filament lamp, TV set	100W	100W	100W
Capacitive Load	x2	x1.5	Fluorescent Light, metal-halide lamp	Load	Selection Multiple	
Inductive Load	x3-5	x1.5	Refrigerator, electric fan, electric range	150W	450	300W

- 1) When more than two loads are connected to the generator set, switch on the largest current load first and switch on loads one at a time.
- 2) Only qualified electrical personnel should connect generator to household power supply.
- 3) Inspect the connections of the generator before the loads are applied. If the connections are not correct the generator can be damaged or cause fire.
- 4) After connecting the electric devices, switch the A.C. breaker to the "ON" position. Operating the generator with breaker held in position or starting the generator with load is forbidden.
- 5) Overload current will automatically shut off the A.C. breaker. If breaker shuts off, disconnect the load and wait for one minute before reconnecting the load.

Stopping the Engine

- 1) Cut off the A.C. breaker
- 2) Turn off the engine switch
- 3) Remove any load
- 4) Shut off the fuel valve



Maintenance



WARNING

When performing an adjustment:

- Shut engine off.
- Disconnect spark plug wire from plug and keep it at a distance.
- Disconnect the battery on electric start models.
- When testing, use an approved spark plug tester. Do not remove plug and use it to check spark indication.
- Rotating parts can entangle hair, clothing and body parts. Keep them a safe distance.
- Always operate equipment with all of the guards in place.

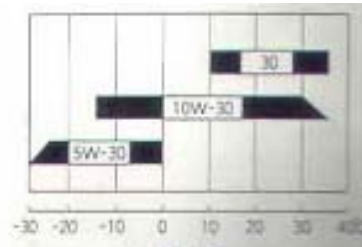
Maintenance Schedule

	Before operation each time	After 20 hours of operation	Every 50 hours of operation	Every year or every 100 hours of operation
Check Engine Oil	√			
Change Engine Oil		√		√
Check Air Cleaner	√			
Replace Air Cleaner			√	
Check electrolyte level of battery	√			
Replace spark plug				√

Spark plug type: NGK- BP6ES, Gap .028 to .031 in.

- 1) Change Engine Oil
 - a) Remove oil cap.
 - b) Remove the oil drain plug, and let oil drain out thoroughly.
 - c) Replace the drain plug.
 - d) Refill with oil until it shows in the hatched area on the dipstick (Approximately 1 quart).
 - e) Replace the dipstick.
 - i) Oil should be disposed in a proper manner. Contact your local dealer for more information.

Note: Use Four-stroke engine oil. SE, SF or equivalent to SG grade oil (SAE-30). When temp is below 50°F SAE 10W30 is recommended. When temp is below 5°F SAE 5W-30 is recommended.



Storage

- 1) Store with an empty fuel tank.
 - a) Open fuel valve and drain fuel into an approved container.
 - b) Close fuel valve and unscrew filter cup to drain out the fuel cup.
 - c) Remove the drain plug in the carburetor fuel bowl to remove fuel from the carburetor.
 - d) Change engine oil. Refer to Maintenance section.
 - e) Store generator in a clean dry space.

Troubleshooting

- 1) Engine will not start
 - a) Ensure engine switch is in the "ON" position.
 - b) Check the fuel level.
 - c) Check engine oil level
 - d) Check spark plug condition.
 - e) Consult your local service representative.
- 2) No Voltage
 - a) Check the electrical equipment (such as lamp bulb).
 - b) Ensure the A.C. breaker is in the "ON" position.
 - c) Consult your local service representative.

Models / Parameters

APP 6000 Dimension/Weight

Model	APP6000
LxWxH - Inches	28.5X23.5X24.5
Net Weight	190lb
Gross Weight	199lb

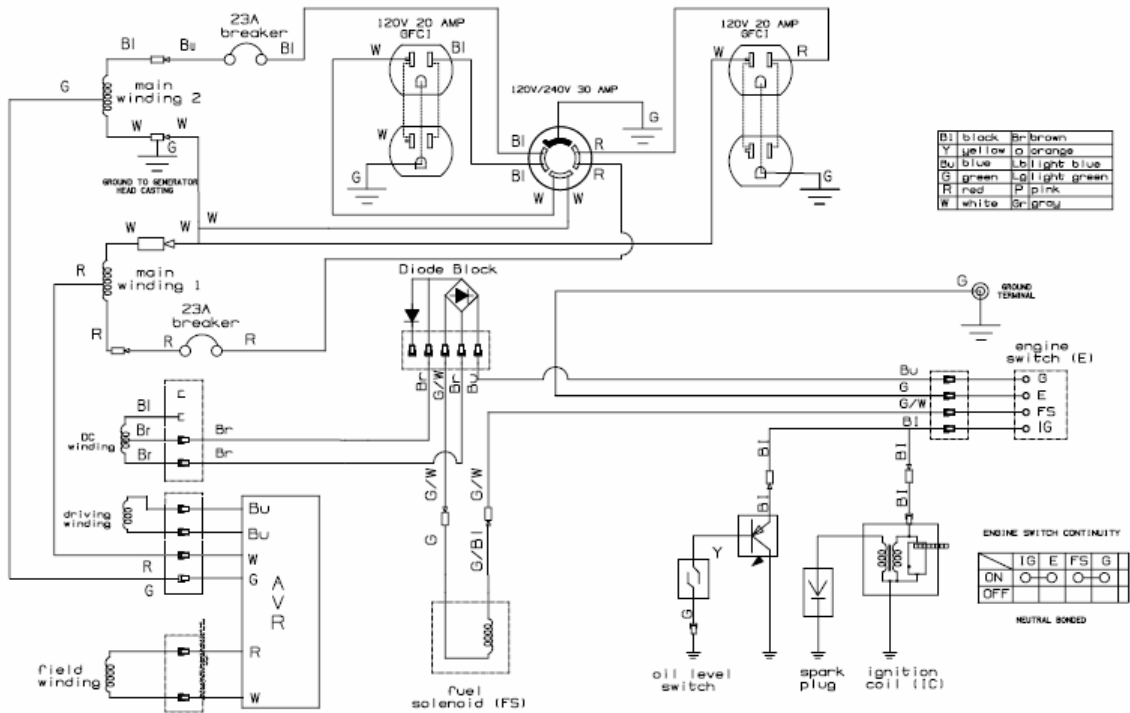
Generator

Model		APP6000
A.C. Output	Rated Voltage	110V / 220V
	Rated Frequency	60HZ
	Rated Current	27.3A
	Rated Output	6.0KW
	Max Output	6.3KW
	Surge Watts	8250W

Engine

Model	390HOH
Engine Type	4-stroke, overhead valve, cylinder tilt 25°
Cylinder discharge capacity	389 cc
Bore x Stroke	88x64 mm
Cooling System	Forced Air Cooling
Ignition System	Transistor Magnet Ignition
Spark Plug	NGK, BP6ES
Engine Oil Volume	1.1Qt
Fuel Volume)	6.6 Gallon
Compression Ratio	8.0:1

Wiring Diagrams



U.S. EPA & California Emissions Control Warranty Statement

The U.S. Environmental Protection Agency and the California Air Resources Board and General Power Products Company are pleased to explain the Emissions control system warranty on your equipment. In California, new engines must be designed and built to meet the state's anti-smog standards. Elsewhere in the U.S. similar standards must be met that are set forth by the U.S. EPA. GPP will warrant the emissions control system of your engine for the time periods listed below, provided there has been no unapproved modification, improper maintenance, abuse or neglect of your product.

Your emissions control system includes parts such as the air cleaner, ignition system, muffler and carburetor.

Where a warrantable condition exists, GPP will repair your engine at no cost for parts, labor and diagnosis.

GPP Emissions System Warranty Coverage

Engines are warranted with respect to the emissions control parts for a period of two years. If any emissions part is found defective during that period it will be replaced or repaired by GPP.

Owners Warranty Responsibility

As an engine and equipment owner, you are responsible for the required maintenance listed in the owner's manual. GPP recommends you retain all records associated with the maintenance and repair of you product, but GPP cannot deny the warranty solely on the lack of receipts or your failure to produce records of the performed maintenance.

You are responsible for presenting your product to an authorized repair and service outlet as soon as problem arises. The warranty repairs should be completed in a reasonable amount of time. The time should not exceed 30 days.

You may be denied warranty coverage if your product has failure due to unapproved modification, improper maintenance, abuse or neglect.

An authorized GPP service representative can perform warranty or service. For more information on those service representatives see your local yellow pages or contact General Power Products at 1-513-707-5790.

GPP Emissions Control Warranty Provisions

The warranty explains your rights and responsibilities under the emissions control warranty which is provided to you by General Power Products Company according to California Law. GPP also provides a limited warranty for purchasers of new products on a separate sheet. The emissions control warranty applies only to the emissions control system of your product. If there is a conflict in terms between the emissions control warranty and the GPP Limited Warranty, the emissions control system warranty shall apply.

It must be authorized General Power Products service representative that perform warranty work. Evidence of the purchase date to the original purchaser must be presented to the service representative at the time of request to perform warranty. GPP is not responsible for service calls or transporting the product to the warranty service location. The purchaser is responsible for any loss or damage in connection with transportation of the product or parts thereof submitted for inspection and warranty work.

If you have any question regarding warranty rights and responsibilities, contact General Power Products Company at 1-513-707-5790.

The following are provisions related to the Emissions Control Warranty Coverage:

1. GPP warrants the product to the initial owner and any subsequent owner that the parts are free from material and workmanship defects, which causes failure for a period of two years from the date the product is delivered to the retail purchaser.
2. Warranted parts are as follows:
 - a. Fuel System
 - i. Carburetor
 - ii. Fuel Pump
 - b. Air intake system
 - i. Air cleaner
 - ii. Intake manifold
 - c. Ignition System
 - i. Spark plug
 - ii. Ignition Module system
 - d. Muffler System
 - i. Muffler
 - ii. Exhaust manifold
 - e. Other components
 - i. Crankcase breather tube
 - ii. Flywheel
3. Warranty coverage shall be excluded for failures in which original GPP parts were not used. Warranty coverage shall be excluded where unapproved modifications, improper maintenance, abuse or neglect exists.
4. Any part that is scheduled for routine maintenance replacement will be covered up to the time for that part to be replaced or repaired under the scheduled maintenance period. The owner is required to perform all scheduled maintenance.
5. The owner shall not be charged for any diagnostic labor that leads up to the determination that the part is defective. An authorized General Power Products representative must perform the work.
6. Repair or replacement of a warranty part shall be at no charge to the owner when done by an authorized General Power Product representative.

Limited Warranty for General Power Products

General Power Products, LLC ("GPP") will bear the cost to replace or repair any part of a new product that is defective due to material and/or workmanship. The purchaser is responsible for all transportation cost associated with this warranty repair or replacement. All warranty service must be performed by an authorized representative. For a service representative near you call GPP, at 513-707-5790.

This express warranty is in lieu of all other express or implied warranties. No parties or affiliates can make any warranty, promises or representations either written or oral to the quality of this product, other than what is set forth herein. Implied warranty of merchantability and/or fitness for a particular purpose, are limited to the time period of one (1) year for consumer use and ninety (90) days for commercial use. Consumer use shall mean any product used for consumer's personal, residential and household use. Commercial use shall mean any product used for commercial, income producing or rental purposes. Once a product has experienced commercial use it will be considered commercial use for the remainder of the warranty period.

For the warranty period, proof of the date of sale and proof of purchase receipt by original owner are required. If proof of the date of purchase is not provided, the date of manufacture will be used to determine the warranty period.

The warranty covers material and workmanship related defects. Below are some of the causes for product failure that the warranty will not cover:

- As with all mechanical components certain parts need to be repaired or replaced due to normal use. The warranty will not cover those parts required to be replaced or repaired when normal use has exhausted the life of the part.
- The life of the product depends on proper maintenance and the care it receives in handling. Improper maintenance of the air cleaner, spark plug, gas and oil can cause premature wear. Examples are: dirty air entering the cylinder through the air cleaner or improper spark plug cleaning. Dirty fuels and oils, which will clog lines and carburetors.
- The indication of unapproved modifications, improper maintenance, abuse or neglect.
- Use of parts that are not original GPP parts will in some cases void the warranty.
- Products damaged due to over speeding or over heating due to clogged cylinder heads or air passages because it was used in a dirty, grassy or debris area without proper intervals of cleaning.
- Parts damaged due to excessive vibration from the area it was used in.
- Broken or bent parts due to accidental strikes from an outside source.
- Routine adjustments or tune-ups necessary for routine maintenance.
- Damage caused by the use of alternative fuels.

Wattage Reference Chart

	Running Watts	Surge Watts
Home		
Sump Pump - 1/3HP	800	1300
Light bulb - 60 Watt	60	0
TV	500	0
DVD Player	100	0
Water Pump	1000	2000
Box Fan	200	0
Kitchen		
Refrigerator/Freezer	800	1600
Electric Stove 8" element	2100	0
Microwave	1000	0
Coffee Maker	1500	0
Toaster	1200	0
Dishwasher	1500	1500
Washing Machine	1200	2300
Electric Dryer	5400	1400
Iron	1200	0
Heating and Cooling		
Electric water heater	4000	0
Space Heater	1500	0
Ceiling Fan	800	1200
Gas Furnace Blower	800	1200
Window AC-12,000BTU	3250	4000
Window AC-10,000BTU	1250	1800
Heat Pump	4650	4500
Office Equipment		
Computer	800	0
Copier	1500	0
Fax	100	0
Printer	900	0
Job Site		
Work Light, Halogen	1000	0
Circular saw, 10 inch	2000	2000
1/2 Drill	600	900
Reciprocating Saw	1000	0
Air Compressor 1-1/2HP	2600	2600
Camping		
Radio AM/FM	100	0
Battery Charger	1000	0
Electric Grill	1800	0

Example			
	How to Calculate	Running Watts	Surge Watts
1	Air Compressor 1-1/2HP	2600	2600
2	Box Fan	200	0
3	Gas Furnace Blower	800	1200
4	Light bulb - 60 Watt	60	0
5	Window AC-10,000BTU	1250	1800

Total	4910	2600	Highest Surge Watts
	+	4910	Total Running Watts
	=	7510	Surge Watts

With this load you need a generator that produces at least 4900 Running Watts and 7510 Surge Watts